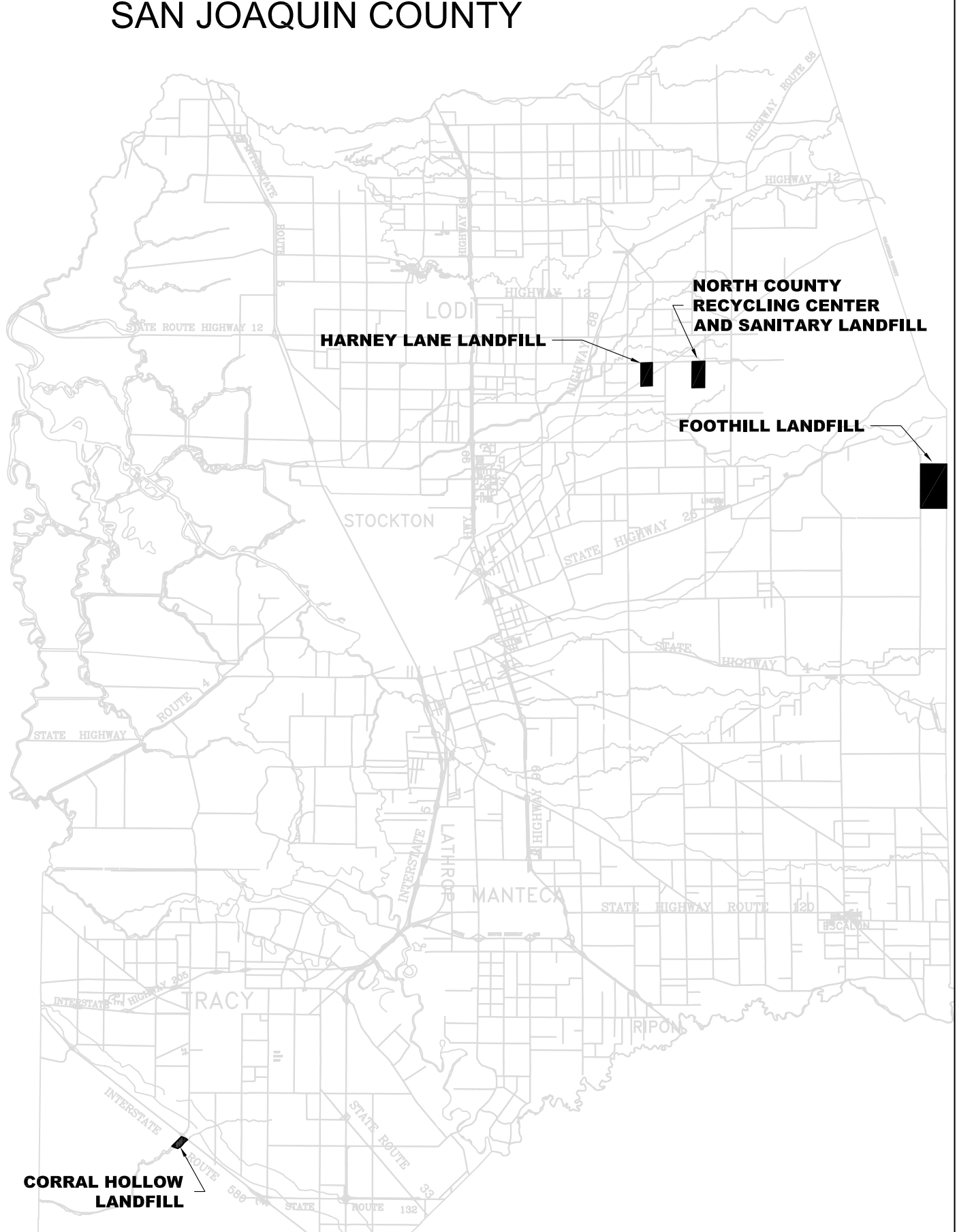
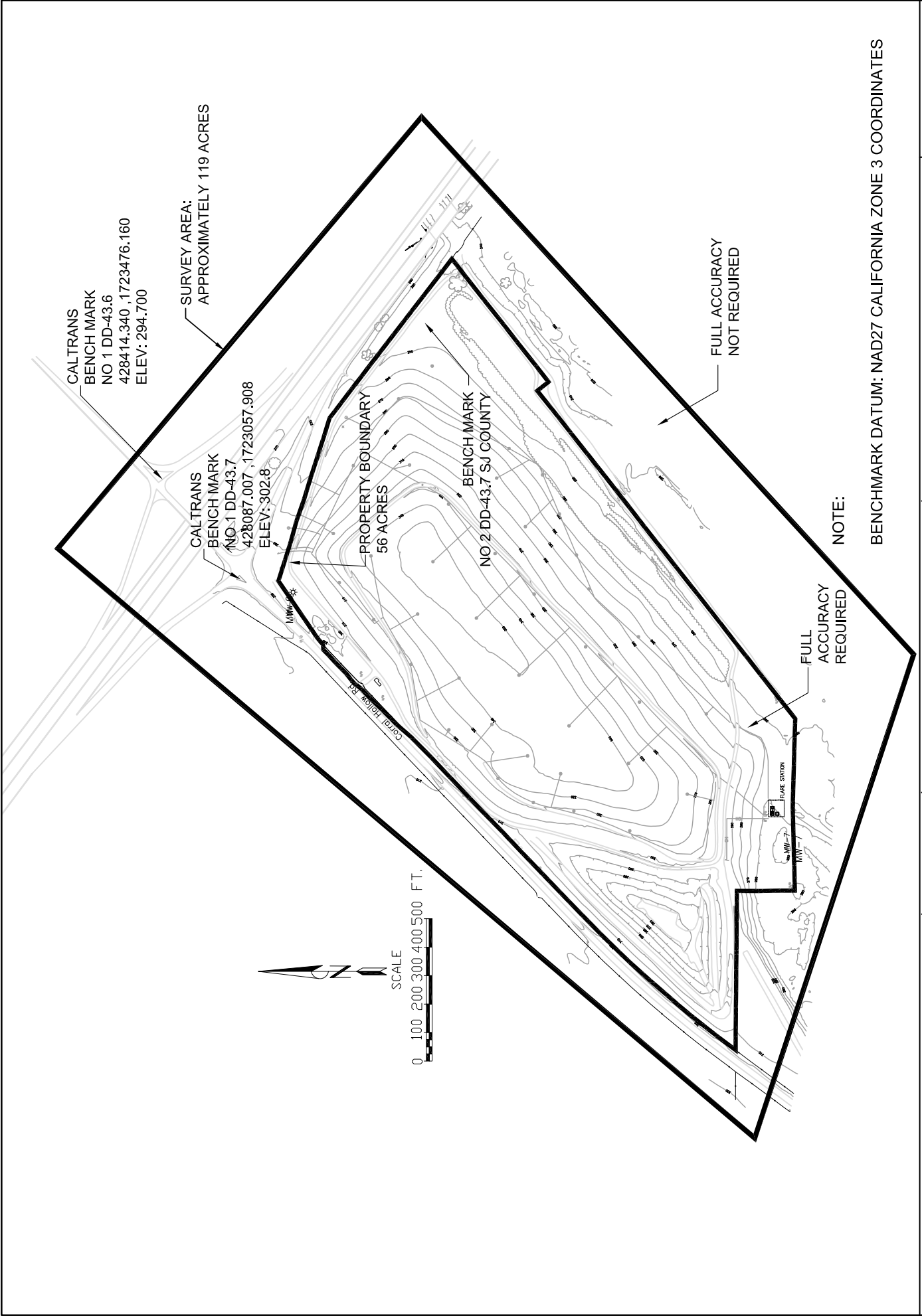


SAN JOAQUIN COUNTY





NOTE:

BENCHMARK DATUM: NAD27 CALIFORNIA ZONE 3 COORDINATES

SURVEY AREA: 386 ACRES

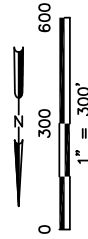
LESS ACCURACY REQUIRED

PROPERTY BOUNDARY
206 ACRES
FULL ACCURACY REQUIRED

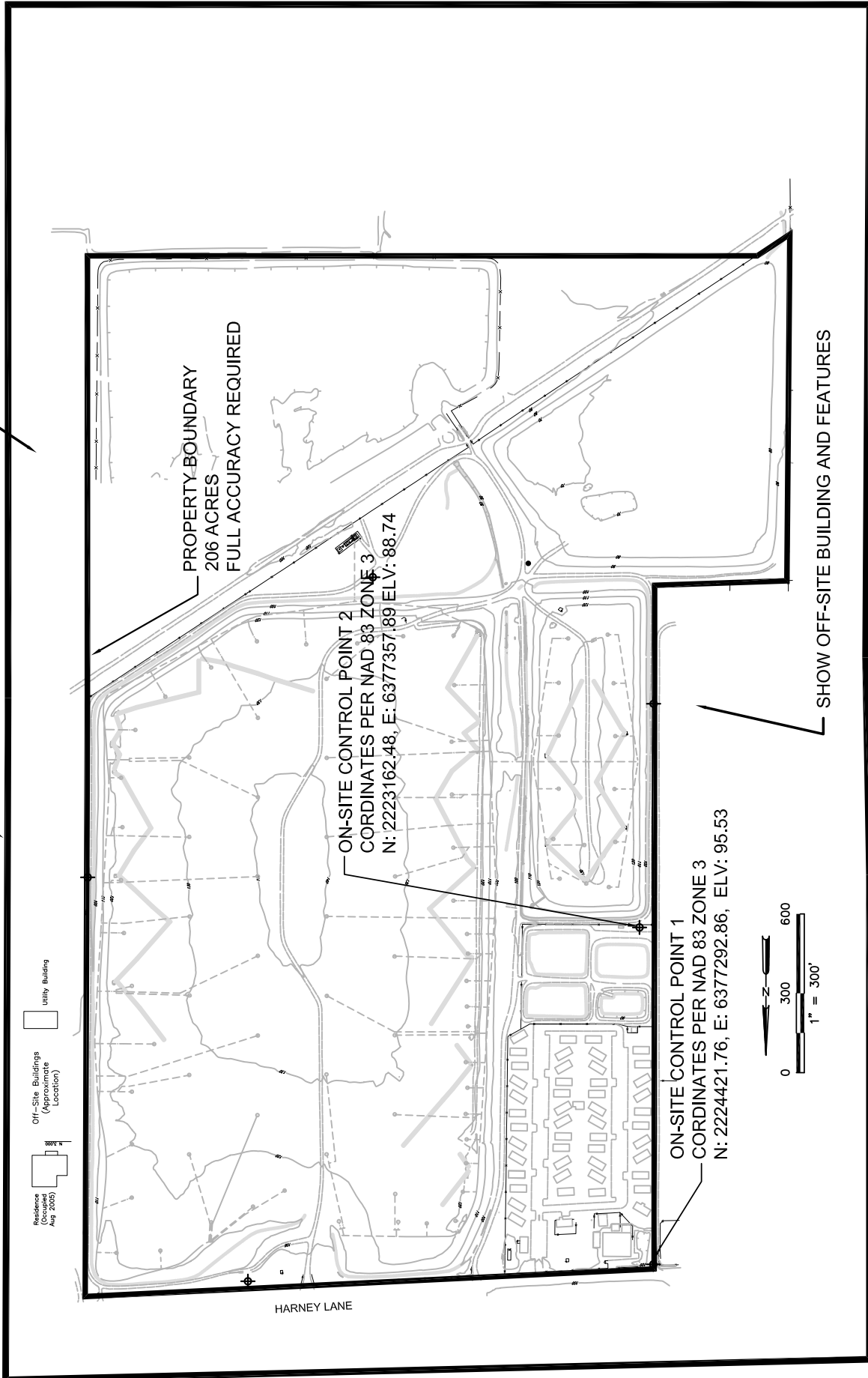
ON-SITE CONTROL POINT 2
COORDINATES PER NAD 83 ZONE 3
N: 2223162.48, E: 6377357.89 ELV: 88.74

ON-SITE CONTROL POINT 1
COORDINATES PER NAD 83 ZONE 3
N: 2224421.76, E: 6377292.86, ELV: 95.53

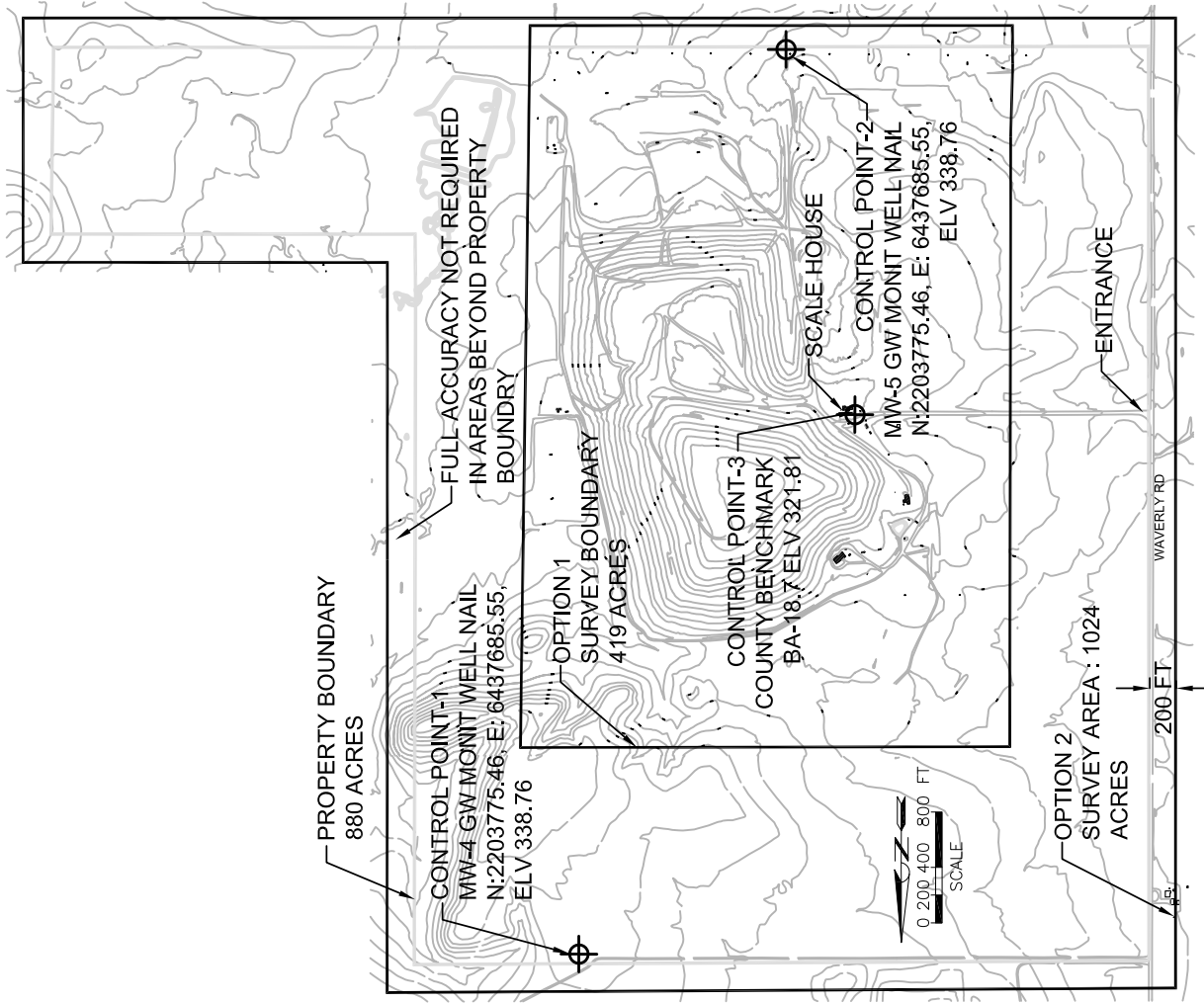
SHOW OFF-SITE BUILDING AND FEATURES

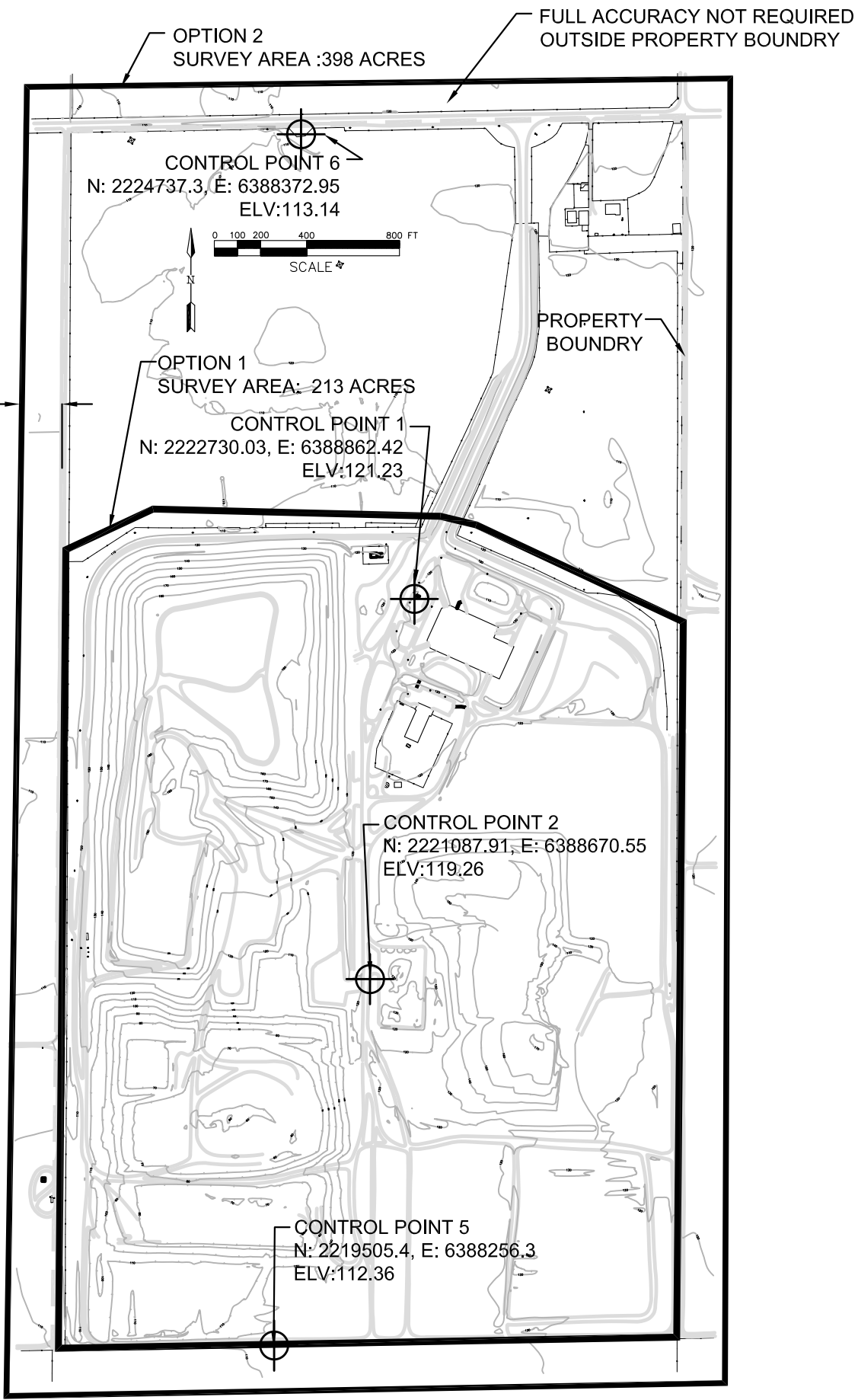


HARNEY LANE



- NOTE:
- 1) HORIZONTAL DATUM: NAD 83
 - 2) VERTICAL DATUM: NGVD 29





NOTE:
 1) HORIZONTAL DATUM: NAD83
 2) VERTICAL DATUM: NAVD 88